



*Everyone Deserves to be Safe*

## Our Predictive AI Platform for Safety

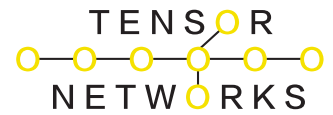


**Saves SLED, Utility, Telco  
Trillions by Investing Billions**  
Situational Awareness Response and Help AI

## INVESTMENT THESIS AND PROSPECTUS INTRODUCTION

2025 Tensor Networks, Inc. All Rights  
Reserved

# The Hard-Headed & Gritty Team:



Introducing the

# SARAHAI<sup>TM</sup>

Platform

*Pattern-Based **Predictive AI** Systems across Multidimensional Event Data  
A New Paradigm of Predictive AI Infrastructure that's Faster and Smarter*



**Eric Frazier**  
CEO - Founder



**Robert Zhu**  
CTO-Co Founder



**Rick Bryant**  
EVP BD



**Steve Climons**  
CMO

## **About Tensor Networks, Inc. – Based in Plug and Play**

- California Corporation - 2021
- Majority of Equity is Owned by the Team
- Exclusive USAF Technology Transfer: **Method and framework for pattern of life analysis**
  - This is the basis of our **SARAHAI Platform**
- **Eric Frazier** – Background Cisco, Silverspring /Itron, Oracle
- **Robert Zhu** – Background Telco, ODM, Johnson Controls
- **Rick Bryant** – Background Veritas CTO Healthcare

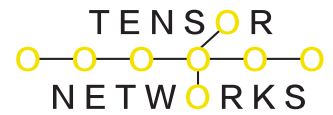
**Sales Channels in Place**

**Recruitment GTM**

carahsoft.



# Back Story: Our Problem...



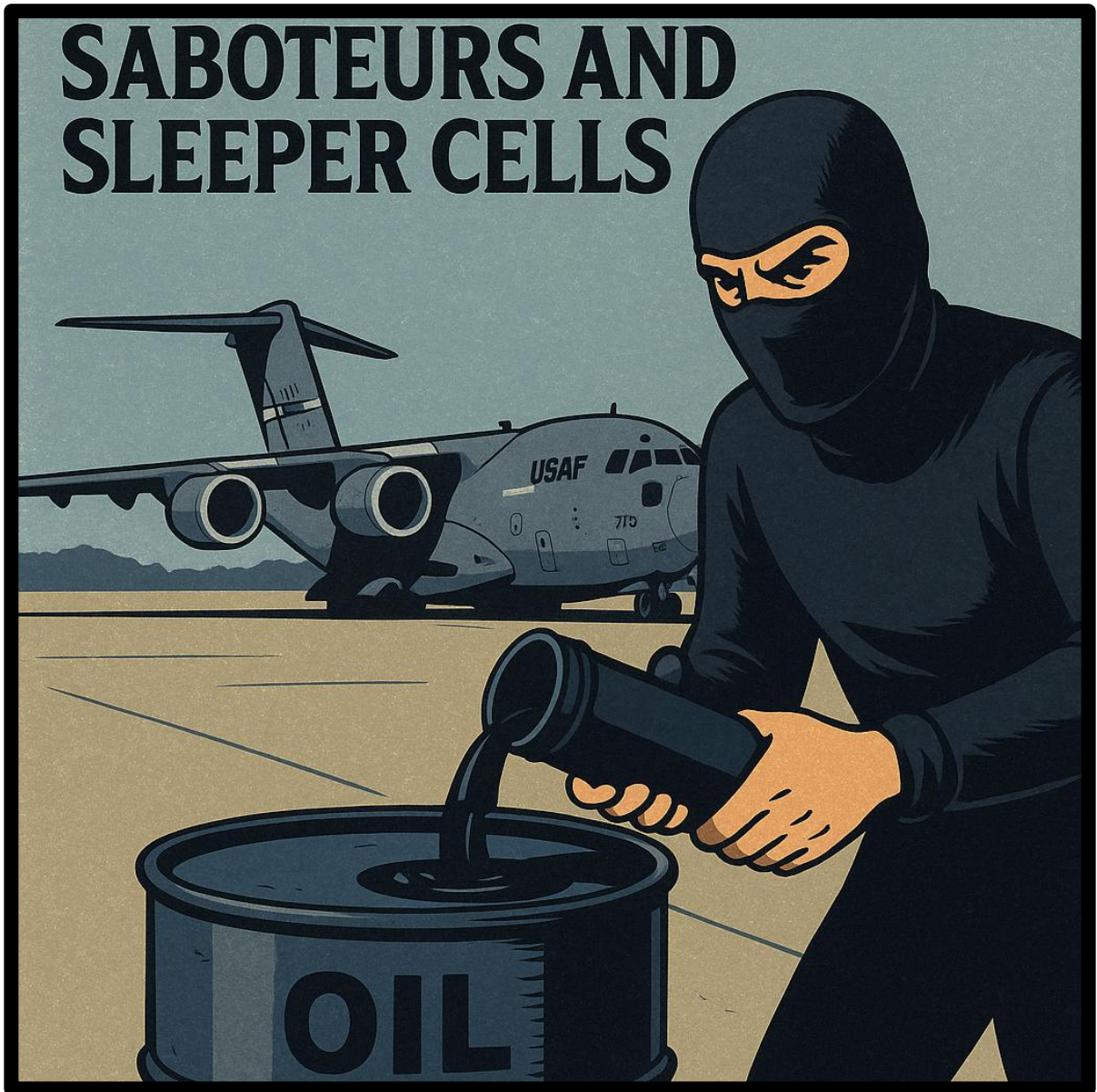
Introducing the

# SARAHAI™

TM

Platform

*Pattern-Based Predictive AI Systems across Multidimensional Event Data  
A New Paradigm of Predictive AI Infrastructure that's Faster and Smarter*



**We are at War Asymmetrically...  
And...It's not Looking Good.**

Introducing the

# SARAHAI™

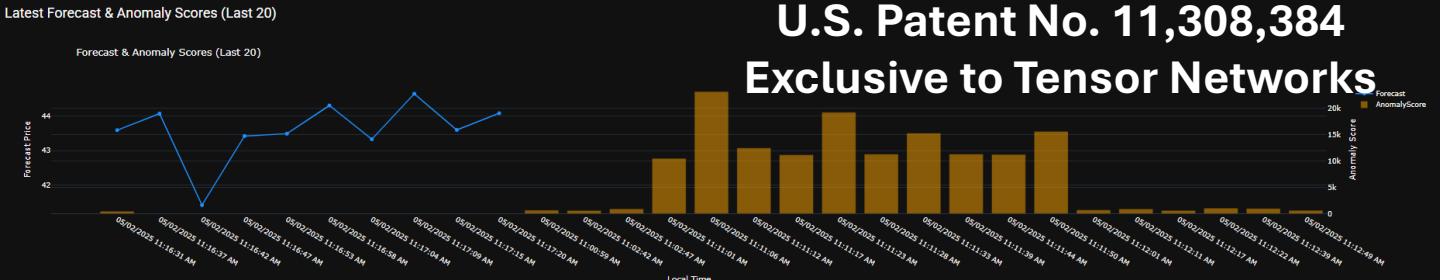
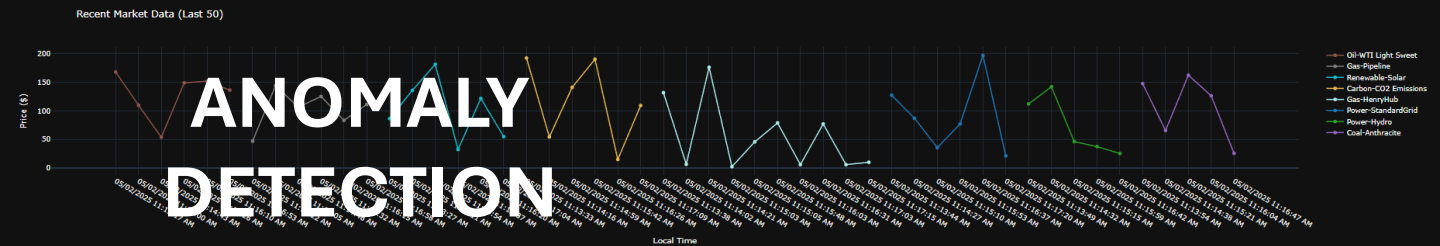
Platform

**Pattern-Based Predictive AI Systems across Multidimensional Event Data**  
**A New Paradigm of Predictive AI Infrastructure that's Faster and Smarter**

Situational Awareness Response and Help AI

## INFERENCE

The dashboard displays a grid of video feeds from various sources, including surveillance cameras and live feeds. A central control panel allows users to interact with the feeds, with a prominent 'Record' button for each feed. The interface is designed for real-time monitoring and analysis of situational awareness.



```

- For the **IPS code**, an unusually large number of anomalies (2.5% of the data) are observed around indices 8 to 55. These anomalies may indicate issues with specific FIP codes or data quality in those regions.

**step 2: Exploring Additional Factors:**

* Examine the sample anomaly indices provided. Do these indexes align with known issues or business processes?
* Investigate the context of relevant revenue columns during these time periods to understand the anomaly distribution. Are there specific industries or products exhibiting high anomalies?

**Step3: Contextual Insights:**
- Analyze the overall dataset to identify trends and patterns that might explain the anomalies
    
```

```

malies': 161530, 'sample_anomaly_indices': [np.int64(2), np.int64(3), np.int64(7), np.int64(16), np.int64(18), np.int64(21), np.int64(27), np.int64(29), np.int64(30), np.int64(31), np.int64(32), np.int64(33), np.int64(35), np.int64(38), np.int64(43), np.int64(46), np.int64(51), np.int64(54), np.int64(56), np.int64(57), np.int64(65), np.int64(66), np.int64(68), np.int64(69)]}, 'use_lof': False, 'lof_summary': {}
    
```

## DATA SCIENCE

Run Analysis

Export Analysis to ODF

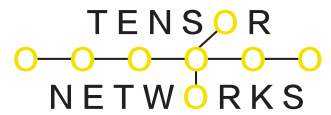
Explain Analysis with LLM

Analyze + Visualize

Clear



# Protecting Critical Infrastructure

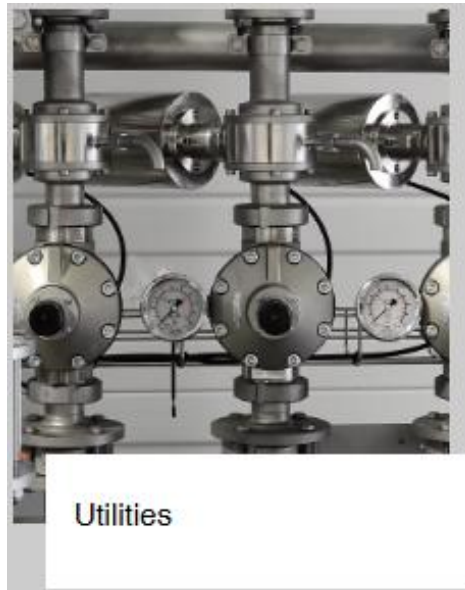


Introducing the

# SARAHAI<sup>TM</sup>

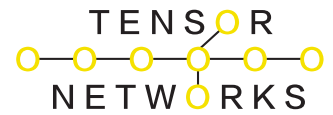
Platform

*Pattern-Based Predictive AI Systems across Multidimensional Event Data  
A New Paradigm of Predictive AI Infrastructure that's Faster and Smarter*



**It's Highly Vulnerable and Not Properly Equipped or Prepared.**

# Our Most Precious Resource



Introducing the

# SARAHAI™

Platform

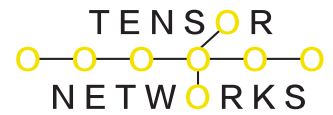
*Pattern-Based Predictive AI Systems across Multidimensional Event Data  
A New Paradigm of Predictive AI Infrastructure that's Faster and Smarter*



## Protecting Schools and Minds



# Everybody Deserves to be Safe.



Introducing the

# SARAHAI™

Platform

**Pattern-Based Predictive AI Systems across Multidimensional Event Data**  
**A New Paradigm of Predictive AI Infrastructure that's Faster and Smarter**

## Pattern based Processing Applications:

### SARAHAI Full Stack Predictive AI

- Edge & Sensor Intelligence**
  - SARAHAI-UAV
  - SARAHAI-EDGE
  - SARAHAI-IOT
- Data Management**
  - SARAHAI-ZERO\_TRUST
  - SARAHAI-NETWORK
- Networking & Communication**
  - SARAHAI-NIDS
  - SARAHAI-FACILITIES
- Inference & Processing**
  - SARAHAI-INFERENCE
  - SARAHAI-DATACENTER
  - SARAHAI-SENTIMENT
- Data Management**
  - SARAHAI-STORAGE
  - SARAHAI-FIREWALL
- Application Services**
  - SARAHAI-ENERGY
  - SERVICE PROVIDER
  - SARAHAI-OSINT

### SARAHAI-ENERGY

AI for Forecasting and Trading Activities

- Energy Markets
- AI Capabilities
- Intraday Forecasting: Predicts prices with machine learning
- Trading Analytics: Optimizes strategies across commodities
- Anomaly Detection: Identifies unusual market behavior
- Risk Assessment: Mitigates exposure through AI insights

Enterprise AI Solutions

### SARAHAI INFERENCE

AI Video Inference Using Edge IP Cameras

- AI Workloads
- Real-Time Processing: Enables immediate analysis and decision-making
- Intelligent Detection: Provides highly accurate identification and alerting
- Low Latency: Utilizes edge computing for rapid response times
- Scalability: Supports large-scale deployment of cameras and analysis

Enterprise AI Building Blocks

### SARAHAI STORAGE

AI-Optimized Storage for AI Workloads

- AI Workloads
- Predictive Caching: Utilizes unsupervised learning to enhance data retrieval performance
- High Throughput: Utilize NVMe/RDMA integration for fast data transfer rates
- GPU Acceleration: Enhances encryption, caching, and analysis for faster processing
- Real-Time Monitoring: Provides deep visibility into usage and storage metrics

### SARAHAI NETWORK

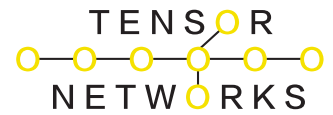
Network Optimization for AI Clusters

- AI Clusters
- Low-Latency Connectivity: Provides high-bandwidth interconnectivity for reduced AI workloads latency
- Adaptive Routing: Dynamically determines optimal data paths within the cluster network
- Edge Integration: Supports efficient edge-to-core communication
- Scalability: Easily scales to accommodate expanding AI infrastructures

Enterprise AI Building Blocks

Our platform is optimized for specific Predictive AI applications to see anomalies for Sentiment, Cybersecurity, Energy Prices, Fraud, Infrastructure Security, Fintech and more... Oh and we also increase the performance of Generative AI Clusters in Datacenters. AI processes patterns. Almost all technology infrastructure is optimized for Enterprise Applications not AI “Pattern” based applications and services.

# What Makes us Standout



Introducing the

# SARAHAI<sup>TM</sup>

Platform

**Pattern-Based Predictive AI Systems across Multidimensional Event Data**  
**A New Paradigm of Predictive AI Infrastructure that's Faster and Smarter**

## 🔒 Predictive AI for Safety & Security: Platform Comparison

Feature / Capability	SARAHAI (Tensor Networks)	Palantir Foundry	Motorola Solutions (CommandCentral)	Cisco SecureX
Real-Time Threat Anomaly Detection	✅ Patented Pattern-of-Life (PoL) + KDE anomaly detection	⚠️ Requires custom model development	⚠️ Event-based with predefined alert rules	✅ Telemetry-based threat detection
Video Inference & Edge Camera Integration	✅ Native edge AI via SARAHAI-INFERENCE with IP camera integration	❌ No native vision processing	✅ Integrated with Avigilon & bodycams	❌ No direct camera support
Predictive Intrusion & Saboteur Modeling	✅ Detects behavior-based anomalies in movement, access, grid activity	⚠️ Custom ontology and manual scenario input	❌ Focused on response, not prediction	⚠️ Network-level focus only
Multi-Source Data Fusion	✅ Fuses sensor, video, access, grid, weather, and utility signals	✅ Strong integration tools (dev required)	⚠️ Primarily focused on Motorola ecosystem	⚠️ Security/IT telemetry only
On-Prem / Air-Gapped Deployability	✅ Fully local (Py/Installer .exe or containerized)	⚠️ Possible with customization	⚠️ Some modules cloud-based (NIB, analytics)	❌ Cloud/SaaS model
Automated Predictive Alerting	✅ Thresholds based on anomaly scores + AI signals	⚠️ Manual rule configuration needed	✅ Alerting on known events or CAD data	✅ SOAR + policy-based response
Situational Awareness Dashboards	✅ Built-in Dash UI with live anomaly maps and ODS report export	❌ Requires UI dev	✅ CommandCentral Aware + analytics overlays	✅ SOC dashboards
Forecasting + Risk Modeling	✅ Intraday & day-ahead forecasting using LSTM + PoL	⚠️ Optional with custom pipeline	❌ Focus on after-the-fact intelligence	⚠️ Limited to breach and attack simulations
Use of Patented Predictive AI	✅ U.S. Patent No. 11,308,384 (PoL + KDE framework)	❌	❌	❌
Best Fit for Gov, Utilities, Defense	✅ Tailored for critical infrastructure, military, utility, city operations	✅ Large fusion/intel environments	✅ Public safety, dispatch, law enforcement	⚠️ Enterprise SOCs

### Platform

### Best Fit Use Case

SARAHAI

AI-driven security for defense, utilities, smart cities, airports

Palantir Foundry

Strategic intelligence & national-level data fusion environments

Motorola Solutions (CommandCentral)

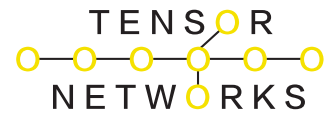
Public safety, emergency dispatch, law enforcement coordination

Cisco SecureX

Enterprise network and endpoint security operations centers (SOCs)



# What Makes us Standout

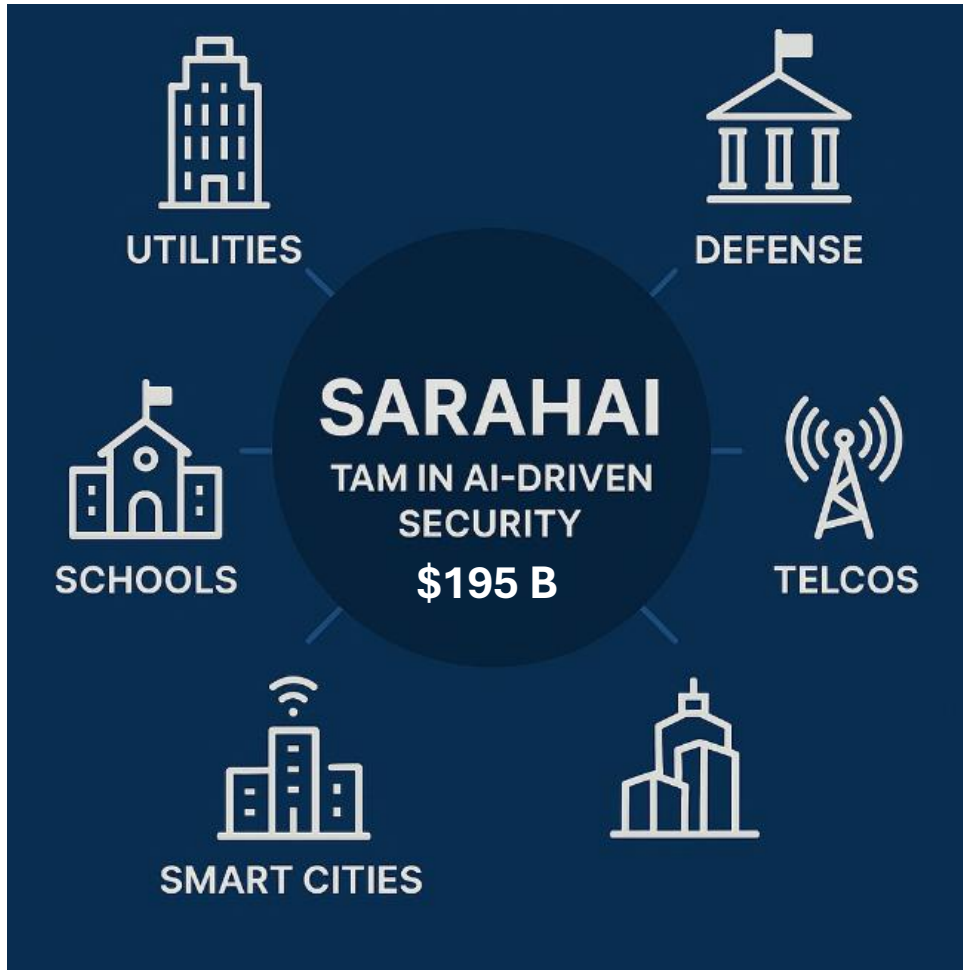


Introducing the

# SARAHAI™

Platform

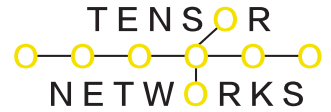
*Pattern-Based Predictive AI Systems across Multidimensional Event Data  
A New Paradigm of Predictive AI Infrastructure that's Faster and Smarter*



## SARAHAI Advantage Across Markets

- Defense:** Real-time PoL detection of sabotage, sleeper cell activity, and insider threats—backed by U.S. Patent No. 11,308,384.
- Utilities:** AI-driven operational resilience for SCADA, grid monitoring, and outage pattern prediction.
- Smart Cities:** Unified video, sensor, and infrastructure AI to preempt risks and reduce emergency response time.
- Schools:** Secure on-premise behavioral threat analysis for active shooter prevention and early anomaly detection.
- Telcos:** Pattern-based intrusion detection and fraud prediction across billions of signals in near real-time.

# Go-to-Market: Channel and ARR



Introducing the

# SARAHAI<sup>TM</sup>

Platform

**Pattern-Based Predictive AI Systems across Multidimensional Event Data**  
**A New Paradigm of Predictive AI Infrastructure that's Faster and Smarter**



(888) 662-2724

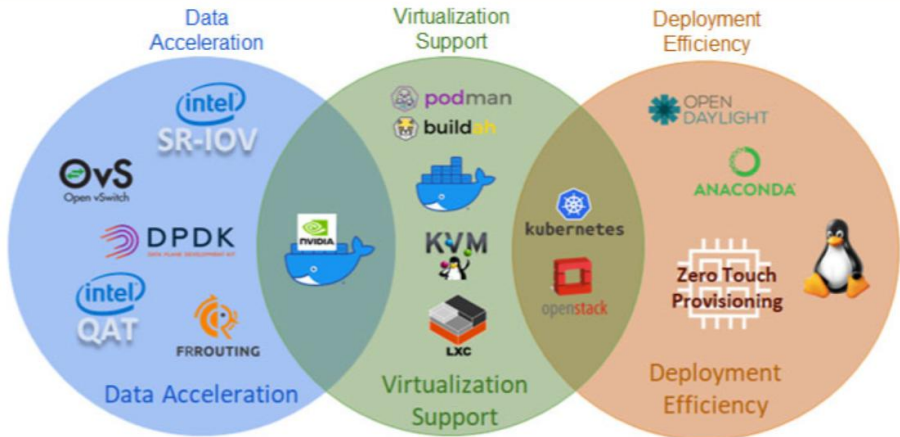
TensorNetworks@Carahsoft.com

Live Chat

REQUEST A QUOTE

Tensor Networks Overview

Contracts



### Contact Us:

Tensor Networks Team at Carahsoft  
Email: [TensorNetworks@Carahsoft.com](mailto:TensorNetworks@Carahsoft.com)  
Fax: (703) 871-8505

[Contracts](#) >

## Tensor Networks Government Procurement Contracts

Federal	State and Local	Education
<b>NASA SEWP V</b> NNG15SC03B/NNG15SC27B May 01, 2015- Oct 31, 2025	<b>Illinois Public Higher Education Cooperative (IPHEC)</b> 2011GAL Jun 30, 2020- Apr 30, 2025	<b>Cobb County, GA Technology Products, Solutions and Related Services - OMNIA Partners, Public Sector</b> 23-6692-01 May 01, 2023- Apr 30, 2026 <i>*Additional Option Years Available</i>
<b>ITES-SW2</b> W52P1J-20-D-0042 Aug 31, 2020- Aug 30, 2025 <i>*Additional Option Years Available</i>	<b>NASPO ValuePoint</b> AR2472 Oct 14, 2016- Sep 15, 2026	
	<b>RCA - Orange County - OMNIA Partners</b> RCA-017-21010004 May 01, 2021- Apr 30, 2025	

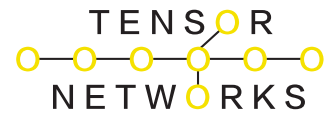
### Contact Us:

Tensor Networks Team at Carahsoft  
Email: [TensorNetworks@Carahsoft.com](mailto:TensorNetworks@Carahsoft.com)  
Fax: (703) 871-8505

[Contracts](#) >



Thank You!



Introducing the

# SARAHAI<sup>TM</sup>

Platform

*Pattern-Based Predictive AI Systems across Multidimensional Event Data  
A New Paradigm of Predictive AI Infrastructure that's Faster and Smarter*

Please visit our website.

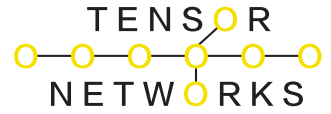
[www.tensornetworks.com](http://www.tensornetworks.com)



**We Cannot Lose This Fight  
If America Goes Down...The Free World  
Goes Down.**

# PG&E Utility Pattern App

## SARAHAI-IoT



C:\WINDOWS\system32\cmd. Command Prompt - mosquitto Command Prompt - SARAHAI- Utility v1.3

```
Data 23.8 sent to MQTT topic: pge/underground/temp/172435_10
172435_11
Data 23.8 sent to MQTT topic: pge/underground/temp/172435_11
172435_12
Data 23.7 sent to MQTT topic: pge/underground/temp/172435_12
172433_1
Data 23.4 sent to MQTT topic: pge/underground/temp/172433_1
172433_2
Data 23.6 sent to MQTT topic: pge/underground/temp/172433_2
172433_3
Data 23.6 sent to MQTT topic: pge/underground/temp/172433_3
172433_4
Data 23.5 sent to MQTT topic: pge/underground/temp/172433_4
172434_5
Data 23.8 sent to MQTT topic: pge/underground/temp/172434_5
172434_6
Data 23.7 sent to MQTT topic: pge/underground/temp/172434_6
172434_7
Data 23.7 sent to MQTT topic: pge/underground/temp/172434_7
172434_8
Data 23.7 sent to MQTT topic: pge/underground/temp/172434_8
172435_9
Data 23.6 sent to MQTT topic: pge/underground/temp/172435_9
172435_10
Data 23.8 sent to MQTT topic: pge/underground/temp/172435_10
172435_11
Data 23.8 sent to MQTT topic: pge/underground/temp/172435_11
172435_12
Data 23.7 sent to MQTT topic: pge/underground/temp/172435_12
```

SARAHAI - Utility v1.3

Export CSV

Recent Temperature Readings (Last 50)

ID	SensorID	Value	Timestamp	Type
199	331	23.8	2025-03-12 ...	temp
200	332	23.7	2025-03-12 ...	temp

## Utility and Telecom Segment

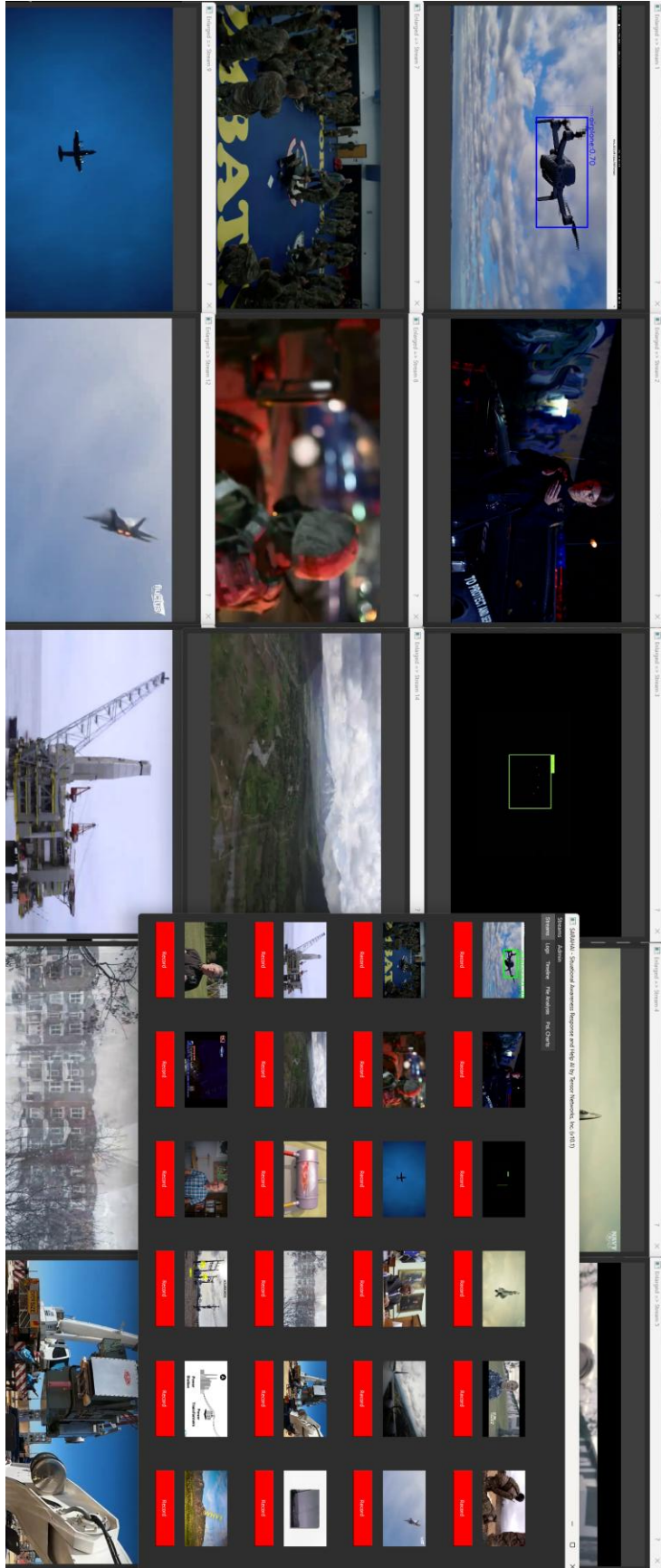
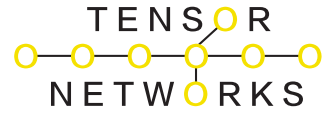


# SARAHAI-IoT

Feature	SARAHAI-Uv1.4 (SARAHAI-UTILITY)	Splunk	Datadog	IBM QRadar	Microsoft Sentinel
<b>Real-Time Data Ingestion (MQTT, Logs, Sensors, Events)</b>	✔ Yes	✔ Yes	✔ Yes	✔ Yes	✔ Yes
<b>Pattern-of-Life (PoL) Analysis Using KDE</b>	✔ Yes	✘ No	✘ No	✘ No	✘ No
<b>Machine Learning-Based Anomaly Detection</b>	✔ Yes (Hybrid ML + KDE)	✔ Yes (ML-Based)	✔ Yes (ML-Based)	✔ Yes (ML-Based)	✔ Yes (ML-Based)
<b>Historical Trend Analysis (Date-Range Selection)</b>	✔ Yes	✔ Yes	✔ Yes	✔ Yes	✔ Yes
<b>Edge Deployment (Local AI Processing)</b>	✔ Yes	✘ No	✘ No	✘ No	✘ No
<b>Multi-Source Data Analysis (Logs, Packets, Events)</b>	✔ Yes	✔ Yes	✔ Yes	✔ Yes	✔ Yes
<b>Real-Time Anomaly &amp; Risk Detection</b>	✔ Yes	✔ Yes	✔ Yes	✔ Yes	✔ Yes
<b>Anomaly Highlighting (UI Visualization)</b>	✔ Yes (Color Coded)	✘ No	✔ Yes	✔ Yes	✔ Yes
<b>Zero Trust Network Access (ZTNA) Integration</b>	✔ Yes	✘ No	✘ No	✔ Yes	✔ Yes
<b>Multi-Protocol Traffic Monitoring</b>	✔ Yes	✔ Yes	✔ Yes	✔ Yes	✔ Yes
<b>Real-Time Traffic Visualization</b>	✔ Yes	✔ Yes	✔ Yes	✔ Yes	✔ Yes
<b>Entity &amp; Threat Clustering</b>	✔ Yes	✔ Yes	✔ Yes	✔ Yes	✔ Yes
<b>Structured OpenDocument (ODT/ODS) Export</b>	✔ Yes	✘ No	✘ No	✘ No	✘ No
<b>Behavioral-Based Intrusion Detection</b>	✔ Yes	✔ Yes	✔ Yes	✔ Yes	✔ Yes
<b>Policy &amp; Threshold Adjustments in UI</b>	✔ Yes	✘ No	✔ Yes	✔ Yes	✔ Yes
<b>Grafana Dashboard Integration (Demo)</b>	✔ Yes	✔ Yes	✔ Yes	✔ Yes	✔ Yes

# Surveillance Pattern App

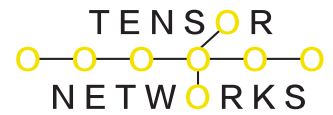
## SARAHAI-INFERENCE



**SECURITY & DEFENSE SEGMENTS**



# SARAHAI-INFERENCE

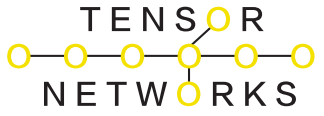


## 3. How SARAHAI-INFERENCE Outperforms Competitors

Feature	SARAHAI-INFERENCE	NVIDIA AI Enterprise	Google Vertex AI	IBM Watson AI	Microsoft Azure AI
Real-Time Multi-Model AI Inference	✔ Yes	✔ Yes	✔ Yes	✔ Yes	✔ Yes
Edge AI Deployment (On-Premise Inference)	✔ Yes	✘ No	✘ No	✘ No	✘ No
Pattern-of-Life (PoL) Anomaly Detection	✔ Yes	✘ No	✘ No	✘ No	✘ No
Hybrid CPU-GPU Execution (Auto-Fallback)	✔ Yes	✔ Yes	✘ No	✘ No	✔ Yes
Privacy-Preserving AI (Local Processing)	✔ Yes	✘ No	✘ No	✘ No	✘ No
No Recurring Cloud Fees	✔ Yes	✘ No	✘ No	✘ No	✘ No
Faster Threat Detection (Low Latency)	✔ Yes	✘ No	✘ No	✔ Yes	✔ Yes
Autonomous Learning & Adaptive Thresholding	✔ Yes	✘ No	✔ Yes	✔ Yes	✔ Yes
Integration with Security Systems (ONVIF, MQTT, RTSP, JSON)	✔ Yes	✔ Yes	✘ No	✔ Yes	✔ Yes
Cloud-Agnostic Deployment (AWS, Azure, Google, On-	✔ Yes	✔ Yes	✔ Yes	✔ Yes	✔ Yes

# Enhancing LLM Pattern App

## SARAHAI-LLM



SARAHAI-LLM by Tensor Networks, Inc. (v9.1) Chat Session

USER: Create a detailed analysis of safetensor methodology and tokenization AI architecture.  
AI: Create a detailed analysis of safetensor methodology and tokenization AI architecture.  
Let's reason this out step by step:  
A. Safetensors are tokens that represent the values in an array, where each value is represented as its own token with some additional metadata (e.g., index position).  
B. The first thing we need to do when creating our training dataset for safe tensors is tokenize all possible combinations into individual strings which can then be fed through an NLP model such as BERT or GPT-2  
C. We will use BPE (Byte Pair Encoding) since it allows us to encode sequences without having any prior knowledge about them beforehand - i.e., no matter what language you speak:  
D. Next up: generating random samples from this distribution using Markov chains / Monte Carlo methods like MCMC simulation; these could serve either one-hot encoded vectors representing classes OR probability distributions over multiple categories at once depending upon requirement!

LLM Generation CSV Analysis CSV Visualization

Model Search

Select discovered Gemma/Llama model:

Or custom path/HF repo:

Load Model

Prompt:  
Create a detailed analysis of safetensor methodology and tokenization AI architecture.

Max new tokens:  Temperature:   Chain-of-thought  Unlimited tokens

AI Response:  
Create a detailed analysis of safetensor methodology and tokenization AI architecture.  
Let's reason this out step by step:  
A. Safetensors are tokens that represent the values in an array, where each value is represented as its own token with some additional metadata (e.g., index position).  
B. The first thing we need to do when creating our training dataset for safe tensors is tokenize all possible combinations into individual strings which can then be fed through an NLP model such as BERT or GPT-2  
C. We will use BPE (Byte Pair Encoding) since it allows us to encode sequences without having any prior

Clear Chat Copy Read Aloud Export Chat

Ready. Generate Clear

EDUCATION, RESEARCH & DEVELOPMENT

## SARAHAI-LLM vs Competitors: Comparative Performance Chart

Category	SARAHAI-LLM	GPT-4	LLaMA 2 (7B/13B)	Gemma (2B/7B)	Mistral (7B)
Pattern of Life Analysis	✔ Native, patent-backed	✘ Not built-in	✘ Not built-in	✘ Not built-in	✘ Not built-in
Kernel Density Estimation (KDE)	✔ Integrated core method	✘ Not exposed	✘ Requires external libs	✘ Not available	✘ Not available
Domain Specialization	✔ Tailored to verticals	⚠ General purpose	⚠ General purpose	⚠ General purpose	⚠ General purpose
Inference Speed (Latency)	⚡ Optimized for low-latency	⚠ Moderate (API bound)	✔ Fast (local inference)	✔ Fast (small footprint)	✔ Fast (Mixture of Experts)
Deployment Control	✔ Full on-prem / hybrid	✘ API-only (OpenAI control)	✔ Full on-prem	✔ Full on-prem	✔ Full on-prem
Data Privacy / Sovereignty	✔ Full control	✘ Risk via API	✔ Full control	✔ Full control	✔ Full control
Multimodal (Video, Sensor, IoT)	✔ Native pattern ingestion	⚠ Limited	✘ Text-focused	✘ Text-focused	✘ Text-focused
Explainability	✔ Transparent analytics	⚠ Black-box	⚠ Limited transparency	⚠ Limited transparency	⚠ Limited transparency
Licensing Model	🔒 Enterprise license-ready	✘ Closed API terms	⚠ Restricted (Meta)	⚠ Restricted (Google)	✔ Apache 2.0