



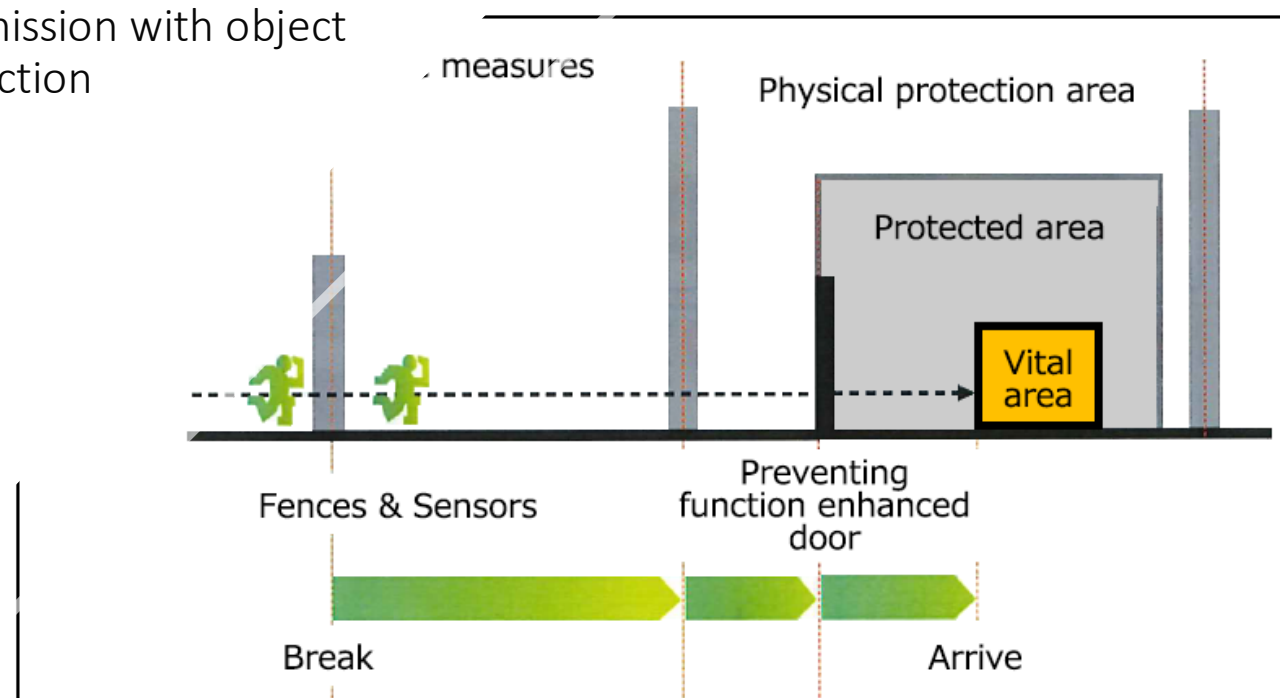
SARAHAI VALUE

Situational Awareness Response and
Help AI Platform for Safety, Security,
and Stability across Hundreds or
Thousands of Sensors.





Alerting on important matters across hundreds or thousands of cameras keeping eyes on mission with object detection



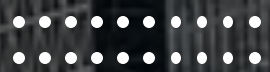


- Object Recognition
- Object Tracking
- Object Data Store – Unencoded and Court-Admissible
- Patterns of Life – Anomaly Detection
- Alerts and attention
- Secure networking across nodes

An illustration of a city street at night. Three modern streetlights with curved poles and dual lamps are shown. Each light pole has a small sensor or camera mounted on it. Dotted lines radiate from the sensors, connecting to various icons in the sky: a Wi-Fi symbol, a sun, a bar chart, and an airplane. The streetlights cast a warm yellow glow. In the foreground, a dark-colored car is parked on the street. The background features a stylized city skyline with various building shapes. The overall color palette is dark with teal and yellow accents.

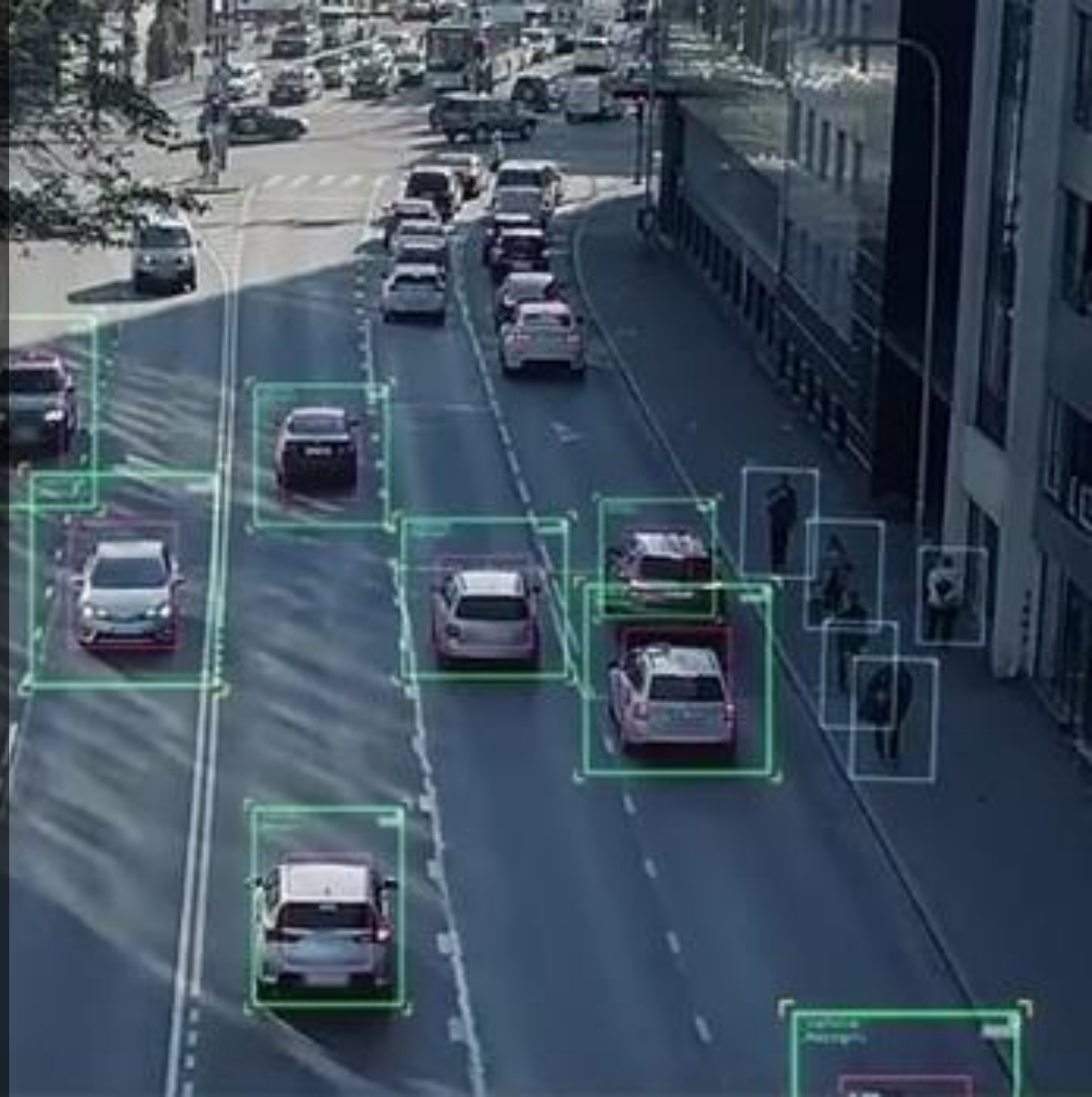
Smart Street Lights

- Thousands of new video feeds coming online
- Too much data for Humans to assimilate
- Big data analytics
- Patterns of life
- More effective capacity planning



Intelligent Transportation Systems

- Thousands of more video feeds and objects from this application
- Alerts on incidents and emergency first responder management
- Traffic direction and management
- City Planning
- Patterns of Life



Protecting our Most Important Assets

- Alerting the Security Operations Center on important matters in real time
- Multiple sensor integration
- Cross campuses, and multi-stakeholder connectivity
- Bolt-on AI to existing Surveillance Camera Systems
- Autonomous M2M safety measures
- Budget conscious



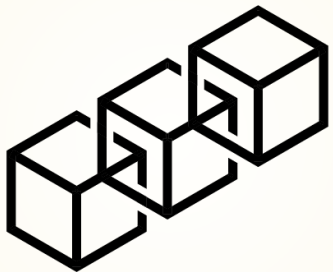


- Situational awareness is vital to manage critical resources
- Utility and Emergency operations Centers
- Reality must be observed
- Streaming analytics and forecasts
- Data recording for future analysis

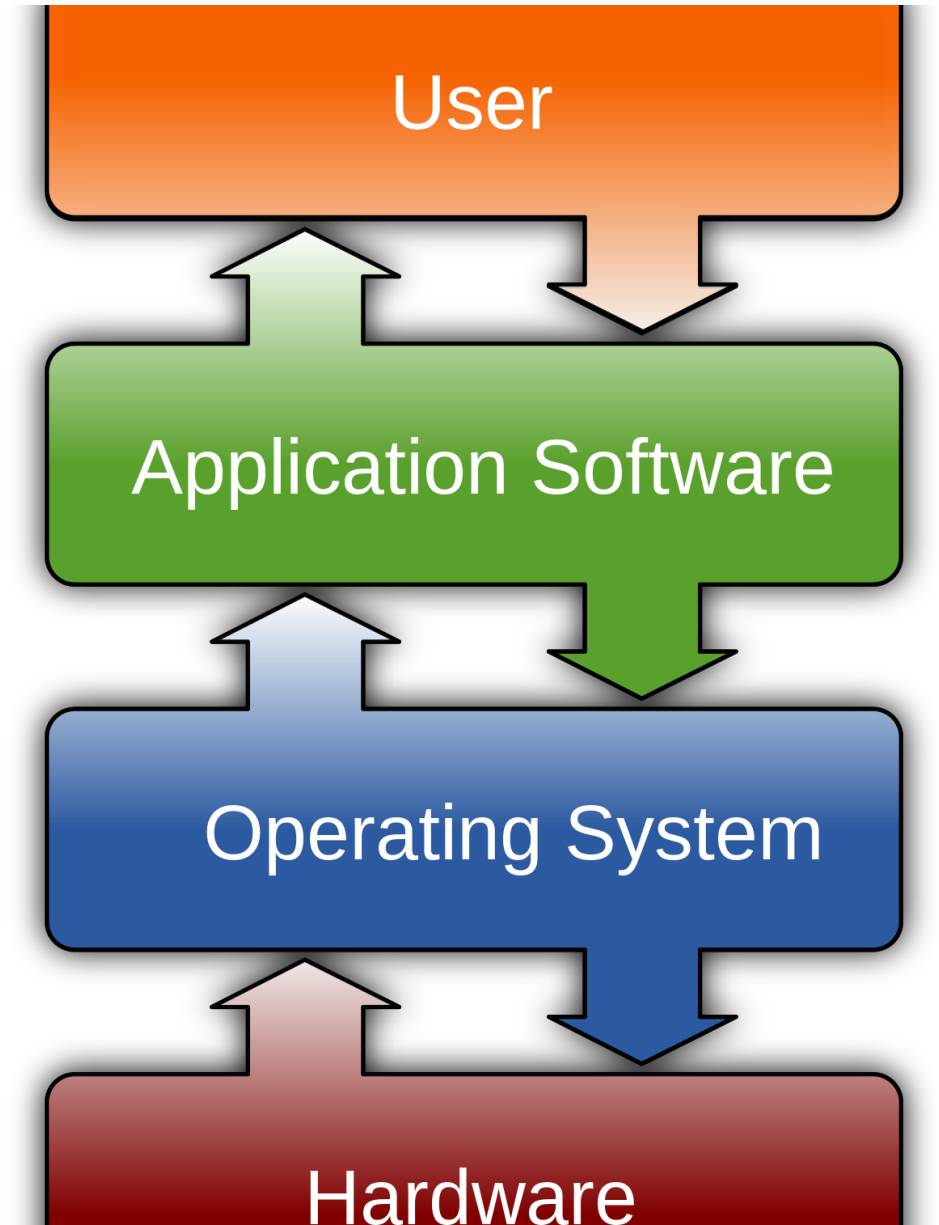
Open Architecture

- Your value is welcome
- Deliver your innovation
- SARAHA1 is a component to your integrated solution
- Help your customers
- Safety, security, and stability
- Chat-GPT, Blockchain, Python
- APIs





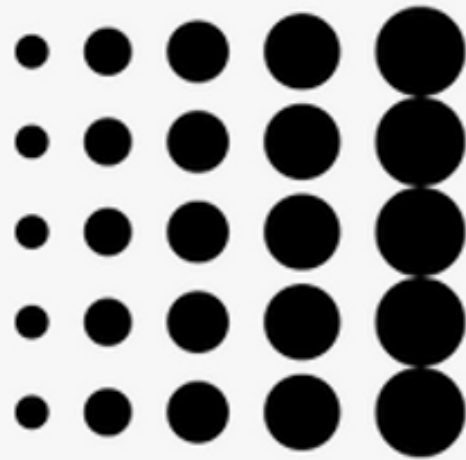
- SARAHAI Runs on COTS Server Architecture and is Software Defined for ongoing updates and new inference models. SARAHAI inherits more features over time becoming even more valuable





SARAHAI Bolts-On to your existing surveillance system extending its lifecycle

SARAHAI
Scales with
Private Cloud



AI
Ramp

Such an Amazing Opportunity to Partner

- We are signing on OEMs, ODMs, ISVs, and MSPs now to implement SARAHAI with their customers
- Join the SARAHAI Ecosystem
- Open Architecture
- Add your value
- Help provide safety, security, and stability
- Contact us at information@tensornetworks.net

